



BaseManager Quick Start Guide

August 6, 2018

Customer Service 1-866-294-5847

Baseline Inc.

www.baselinesystems.com

Phone 208-323-1634

FAX 208-323-1834

Toll Free 866-294-5847

©2018 Baseline Inc. All Rights Reserved.

Table of Contents

Introduction	1
Overview of the BaseManager Quick Start Process	1
Step 1 – Install Your Communication Equipment	1
Step 2 – Check the Firmware Version on Your Controller.....	2
BaseStation 1000	2
BaseStation 3200	2
Step 3 – Connect Your Controller to BaseManager	3
BaseStation 1000	3
BaseStation 3200	4
Step 4 – Get the Registration Code from Your Controller.....	4
BaseStation 1000	5
BaseStation 3200	5
Step 5 – Call Baseline Support to Set Up Your Accounts.....	6
Step 6 – Configure Your BaseManager Account.....	6
Appendix	8
Working with the Site Network Administrator.....	8
Ethernet Radio.....	8
Wi-Fi	8
Wi-Fi Settings Worksheet	9
Connecting Your Controller to a Self-hosted Baseline Server.....	10
Connecting a BaseStation 1000.....	10
Connecting a BaseStation 3200.....	10

Introduction

BaseManager is a powerful cloud-based central control and remote access application that is part of the AppManager framework. BaseManager allows any BaseStation 3200™ or BaseStation 1000™ controller to be managed remotely over the Internet. With BaseManager, you'll be able to do everything you normally have to do at the controller from the convenience of any Internet-connected device.

This quick start guide helps you get connected to BaseManager.

In order for a BaseStation irrigation controller to connect to BaseManager, the controller must have access to the Internet. Every BaseStation 1000 and BaseStation 3200 controller has a built-in Ethernet port that is Internet ready.

Baseline also supports cell modem, Wi-Fi, or Ethernet radio communication modules that connect the controller to the Internet.

Overview of the BaseManager Quick Start Process

Step 1 – Install your communication equipment.

Step 2 – Check the firmware version on your controller and update if necessary.

Step 3 – Connect your controller to BaseManager.

Step 4 – Get the registration code from your controller.

Step 5 – Call Baseline Support to set up your account.

Step 6 – Configure your BaseManager account.

Step 1 – Install Your Communication Equipment

Using the Baseline installation guide that came with your communication equipment, install, connect, and configure the equipment. Check the status lights and indicators on your communication equipment to ensure that it is powered up and appears to be sending and receiving data.

If you have a cell modem, be sure to complete and submit your **Wireless Service Activation Form** that was enclosed with your cell modem communication package. Baseline will not activate your SIM card until we have received your form with your valid billing information. Be sure to read the Wireless Service Terms and Conditions on page 2 of the Wireless Service Activation Form.

If the Internet connectivity at the site is not managed by a network administrator, it's likely that the communication equipment and irrigation controllers will connect to BaseManager without any special configuration. However, if your installation site has a managed network, you will need to work with the network administrator at the site to complete the setup. You might also need to ask the admin to make some configuration changes that allow the communication to/from your device to get out to the Internet via the site's network.

Some examples of when you need to involve a network administrator:

- The network requires a static IP address be assigned to the controller in order to gain access to the network.
- The network uses MAC address filtering to limit access to the network. If you need to find the MAC address of a Baseline irrigation controller, refer to Step 4.
- The network doesn't allow the WS and WSS security protocol.

If you need to involve a network administrator, refer to the Appendix for specific information.

Step 2 – Check the Firmware Version on Your Controller

Before you attempt to connect your BaseStation 1000 or BaseStation 3200 irrigation controller to BaseManager, make sure that it is running the most current version of firmware.

To determine whether the firmware version on your controller is different from the currently released version, go to the Baseline web site (www.baselinesystems.com). Click **Support**, and then click **Firmware Updates**. Click the link for your controller. Review the information on that page to find out what the current firmware version is and then compare that with the version on your controller.

To check the firmware version on your controller:

BaseStation 1000

1. Press the **System Setup** button. The System Maintenance menu displays.
2. Press the **↓** button to highlight the **Firmware Update** option and then press the **OK** button. The Firmware Update screen displays.
3. The **USB Update** option should be highlighted. If it is not highlighted, press the **↑** or **↓** button to highlight it, and then press the **OK** button. The USB Update screen displays. The controller firmware version is listed at the top of the screen.

BaseStation 3200

Turn the dial to the **Advanced** position. The version number of the firmware displays at the bottom of the screen.

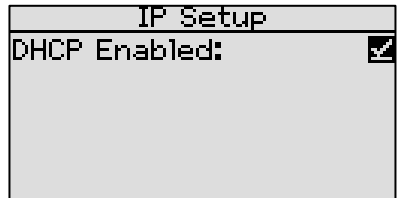
If you find that an updated firmware version is available and you want to replace the firmware on your controller with the new version, refer to the topic on Updating Firmware in your controller's user manual.

Step 3 – Connect Your Controller to BaseManager

IMPORTANT NOTE: Follow the steps below to connect your controller to the cloud-based Baseline server. If the controller needs to connect to a self-hosted Baseline server, refer to the topic in the Appendix.

BaseStation 1000

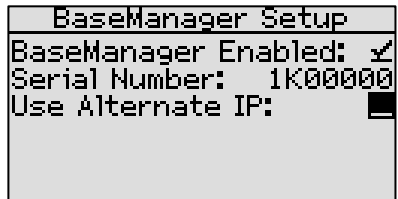
1. Press the **System Setup** button. The System Setup menu displays.
2. Press the \downarrow button to highlight the **Network Setup** option, and then press the **OK** button to select it. The Network Setup menu displays.
3. The **IP Setup** option should be highlighted. If it is not highlighted, press the \uparrow or \downarrow button to highlight it, and then press the **OK** button. The IP Setup screen displays.
4. Make sure that a checkmark displays in the **DHCP Enabled** field.



Note: DHCP (Dynamic Host Configuration Protocol) allows your controller to automatically obtain an IP address, which enables the connection to the Internet. DHCP is the default network configuration for the BaseStation 1000.

In some cases, private network configurations or network security issues might require that you configure a static IP address for your controller. If your controller requires a static IP address, refer to Setting Up a Static IP Address in the BaseStation 1000 User Manual.

5. Press the **Back** button to return to the Network Setup menu.
6. Press the \downarrow button to highlight the **BaseManager Setup** option, and then press the **OK** button to select it. The BaseManager Setup screen displays.
7. Make sure that a checkmark displays in the **BaseManager Enabled** field. If the checkmark is not there, press the + or – button to enter it in the field.



BaseStation 3200

1. After you have installed, connected, and configured your communication equipment, turn the dial on the BaseStation 3200 controller to **Network** position.
2. Press the **Next** button to highlight the **Ethernet Setup** option, and then press **Enter**. The Setup Ethernet screen displays.
3. Make sure that **DHCP** displays in the **IP Address Mode** field.

Note: DHCP (Dynamic Host Configuration Protocol) allows your controller to automatically obtain an IP address, which enables the connection to the Internet. DHCP is the default network configuration for the BaseStation 3200.

In some cases, private network configurations or network security issues might require that you configure a static IP address for your controller. If your controller requires a static IP address, refer to Setting Up a Static IP Address in the BaseStation 3200 User Manual.

Ethernet	Network
IP Address Mode	DHCP
IP Address	[][][][]
Subnet Mask	255 255 255 0
Default Gateway	[][][][][][][][]
Preferred DNS Server	[][][][][][][][]
Preferred DNS Server	[][][][][][][][]
<input type="button" value="Help"/>	

4. Press the **Back** button to return to the Network menu.
5. When the **BaseManager Server Setup** option is highlighted, press the **Enter** button to select it.
6. Press the **Next** button to move to the **Connection** field, and then press the **+** button to change the setting in the field from Don't Connect to **Ethernet**.

Note: If the controller is connected with an Ethernet radio or a Wi-Fi module, the Ethernet option displays in the Connection field. If the controller is connected with a cell modem, the field displays Ethernet+3G.

BaseManager	Network
Server URL Mode	DNS Lookup
Connection	Ethernet
IP Address	[][][][][][][][]
Physical (MAC) Address =	[][][][][][][][][][][][][]
<input type="button" value="Help"/>	

Step 4 – Get the Registration Code from Your Controller

When your controller connects to the Baseline server for the first time, the server detects the connection and checks for an associated BaseManager account. If no account is found, the server sends a registration code to your controller. You might see the PIN displayed on the controller's main screen. You need the PIN when you call Baseline to set up your BaseManager account. You also need the PIN to add a controller to an existing BaseManager account.

After you create your BaseManager account, the PIN no longer displays on the controller.

BaseStation 1000

The PIN displays in a message, but after the message is dismissed from the display, you can find the PIN on the BaseManager Info screen.

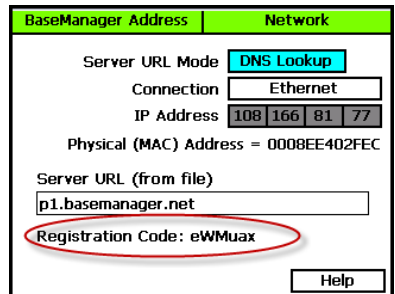
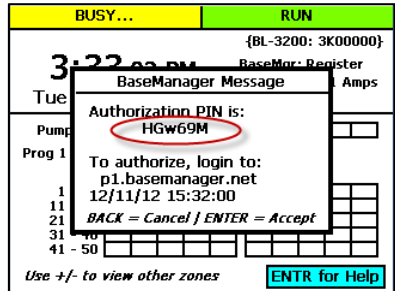
1. Press the **System Setup** button.
2. Press the \downarrow button to highlight the **Network Setup** option, and then press **OK**.
3. Press the \downarrow button to highlight the **BaseManager Info** option, and then press **OK**. The PIN displays on the last line as shown in the illustration.
4. Write down the PIN found in the **Reg. PIN** field on this screen.
5. Write down the MAC address of the BaseStation 1000 controller found in the **MAC** field on this screen.



BaseStation 3200

The PIN briefly displays in a pop-up message as shown in the illustration. After the message is dismissed from the display, you can find the PIN on the BaseManager Address screen.

1. Turn the dial on the BaseStation 3200 controller to **Network**.
2. When the **BaseManager Server Setup** option is highlighted, press the **Enter** button to select it. The BaseManager Address screen displays as shown in the lower illustration.
3. Write down the PIN found in the **Registration Code** field on this screen.
4. Write down the MAC address of the BaseStation 3200 controller found in the **Physical (MAC) Address** field on this screen.



Step 5 – Call Baseline Support to Set Up Your Account

When you are ready to activate your AppManager and BaseManager accounts, call Baseline Support at 866-294-5847. Be prepared to provide the following information:

- Company name
- Site name
- The full name of the person who is to be the company administrator
- The email address of the person who is to be the company administrator
- The registration PIN from one controller at the site
- The MAC address from the same controller

Baseline Support will assign the company admin username and password. The admin can change this password after logging in for the first time.

If you already have a BaseManager account and you are just connecting a new controller to BaseManager, you don't need to set up another account. Just be sure to write down the authorization PIN that displays on your controller when it's connected. Then you will use that PIN to add the controller to your existing BaseManager account. Refer to the Adding Controllers to BaseManager topic in the BaseManager online help. You can access the online help by clicking the **Help** link in the BaseManager menu.

Step 6 – Configure Your BaseManager Account

A BaseManager account allows some users to be assigned company administrator privileges, some site manager privileges, and any number of other users to be given operator privileges. Company administrator privileges are typically assigned to the person whose account is set up during the BaseManager account registration process.

After Baseline Support creates a BaseManager account for your company and updates the basic information, the company administrator is responsible for completing the account setup. The account setup tasks include adding sites, controllers, and users, and then giving users access to specific controllers. The administrator is also responsible for configuring the controller map.

The following steps must be performed by a user with company administrator privileges.

1. On a computer that is connected to the Internet or another web-enabled mobile device, start one of the following web browsers (make sure you have the most current version of the browser):
 - Google Chrome
 - Mozilla Firefox
 - Safari


IMPORTANT! AppManager and BaseManager are not compatible with Microsoft Internet Explorer or Microsoft Edge.


BaseManager Quick Start Guide

2. Type the following web address in the web browser's address bar, and then press **Enter**.

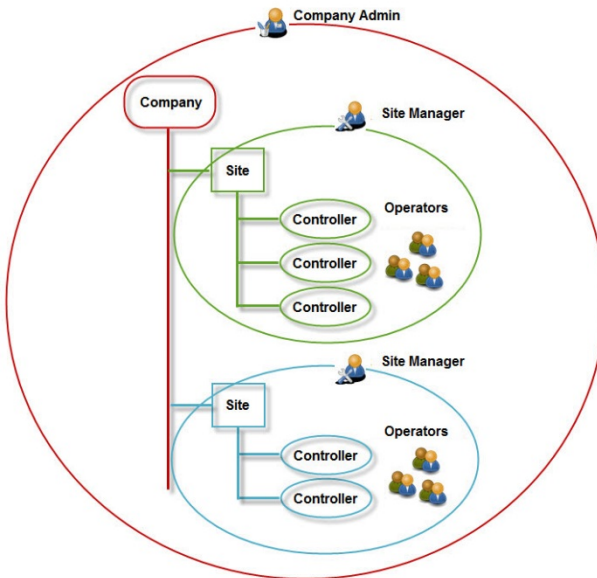
<https://baselineapps.net>

3. On the authentication page, type the username and password given to you by Baseline Support in the appropriate fields, and then click **Sign In**. The AppManager interface displays.

4. Click the BaseManager icon  in the menu on the left. The BaseManager homepage displays.

5. Go into the Company Admin interface by clicking the **Menu** icon  in the upper-left corner of the BaseManager page, and then click **Administration**.

IMPORTANT! If no controllers have been added to your BaseManager account, no data displays in the table on the Controllers in My Company page. You can click the Add a New Controller button, but you cannot add controllers until you have added sites. Make sure that you understand the data hierarchy in BaseManager shown in the illustration below.



6. Click the options in the menu on the left and review the information on the pages that display. Make changes as needed.
7. Refer to the BaseManager Help or the BaseManager User Manual to find the instructions for the various BaseManager tasks that you need to complete. You can access the online help by clicking the **Help** link in the BaseManager menu. The user manual is available on the Baseline website.

Appendix

Working with the Site Network Administrator

If your installation site has a managed network, you will need to work with the network administrator at the site to complete the setup. You might also need to ask the admin to make some configuration changes that allow the communication to/from your device to get out to the Internet via the site's network.

Ethernet Radio

Ask the network administrator to assign a range of **static IP addresses** for the Ethernet radios so that each radio will have a unique static IP address. Your network administrator needs to know how many radios need static IP addresses. However, you don't need to identify the specific radios for the administrator because any IP address can be assigned to any radio unit. Please refer to the Ethernet Radio Configuration Guide for more information.

Ask the network administrator for the **Subnet Mask** and **Default Gateway** for the LAN.

Wi-Fi

Ask the network administrator to fill in the **Wi-Fi Settings Worksheet** for the target network that this Wi-Fi module will connect to. You will find the Wi-Fi Settings Worksheet on the next page of this document.

Wi-Fi Settings Worksheet

Target Wi-Fi Network Name (SSID): _____

Network Type: Infrastructure ONLY

Security Type (check one):

- None (if selected, skip the rest of the sheet)
- WEP
- WPA
- 802.11i/WPA2

Authentication (check one):

- Open/None – (WEP only)
- Shared – (WEP only)
- PSK – (WPA or WPA2)

Encryption:

- 64 bits – (WEP only)
- 128 bits – (WEP only)
- TKIP – (WPA or WPA2)
- TKIP + WEP – (WPA or WPA2)
- CCMP – (WPA2 only)
- CCMP + TKIP – (WPA2 only)
- CCMP + WEP – (WPA2 only)

Key Type (check one):

- Hex
- Passphrase

Key (write clearly): _____

TX Key (for WEP security only): _____

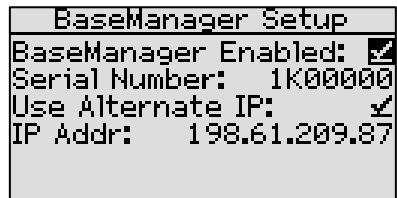
Connecting Your Controller to a Self-hosted Baseline Server

Some organizations prefer to host a standalone instance of the Baseline server. Because a BaseStation controller is pre-configured to connect to the cloud-based Baseline server, some configuration changes are necessary in order to have the controller connect to the self-hosted server.

After the self-hosted Baseline server has been installed and configured, ask the server administrator for the server's IP address.

Connecting a BaseStation 1000

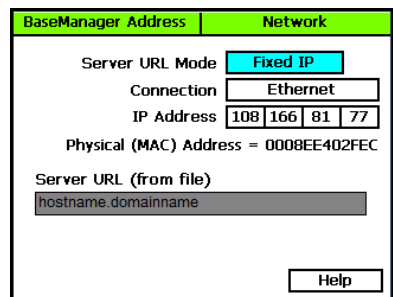
1. Press the **System Setup** button. The System Setup menu displays.
2. Press the **↓** button to highlight the **Network Setup** option, and then press the **OK** button to select it. The Network Setup menu displays.
3. Press the **↓** button to highlight the **BaseManager Setup** option, and then press the **OK** button to select it. The BaseManager Setup screen displays.
4. Press the **↓** button to move to the **Use Alternate IP** field, and then press the **+** or **-** button to enter a checkmark in the field.
8. Press the **↓** button to move to the **IP Addr** field (the field displays when Use Alternate IP is enabled). Press the **+** or **-** button to change the values in the IP address.



Note: To rapidly increase or decrease the value, press and hold the **+** button or the **-** button.

Connecting a BaseStation 3200

1. Turn the dial to the **Network** position.
2. Press the **Next** button to highlight the **BaseManager Server Setup** option, and then press **Enter**. The BaseManager Address screen displays.
3. In the **Server URL Mode** field, press the **+** or **-** button to choose **Fixed IP**.
4. Press the **Next** button to move to the **IP Address** field.
5. Press the **+** or **-** button to update the numbers to match the IP address of the Baseline server. Press the **Next** button to move to the boxes within the IP Address field.



After the controller connects to the server, the hostname and domain name assigned to the server display in the Server URL field.